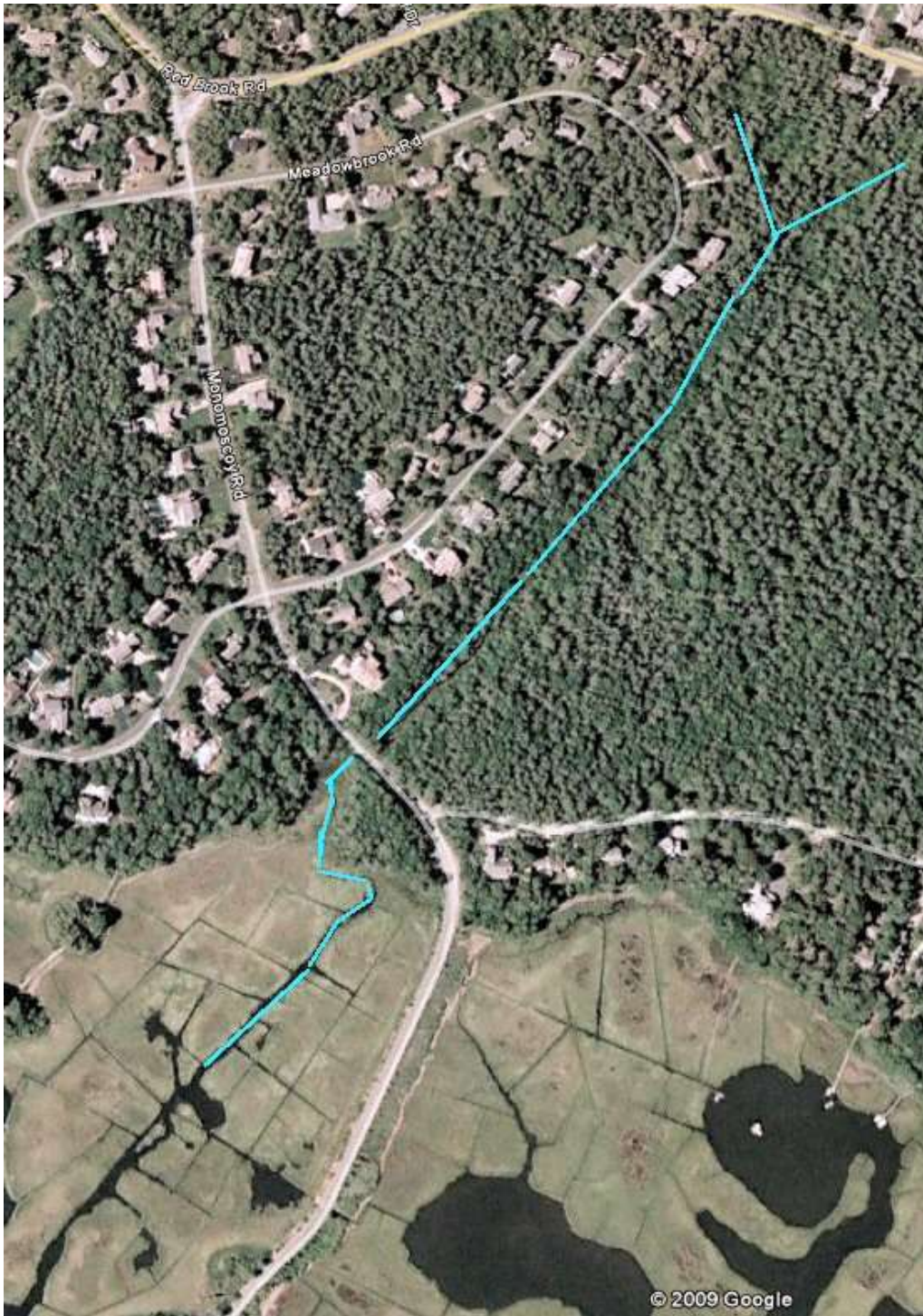


Dutchman's Creek

- Rises in the South Mashpee Pine Barrens (swamp) north of Red Brook Road
- Fed exclusively by groundwater springs
- Many overgrown abandoned cranberry bogs along its length
- Ends in Hamblin Pond, a salt pond entering Waquoit Bay via Little River
- It is bordered by Town, State and Federal Lands





From Monomoscoy Rd viewing towards Waquoit Bay



From Redbrook Rd viewing south



From Redbrook Rd viewing north



Near Monomoscoy Rd