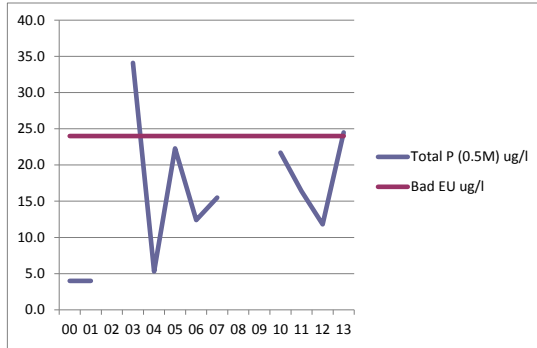


JOHN'S POND

Year	Total P (0.5M) ug/l	Bad EU ug/l
00	4.0	24
01	4.0	24
02		24
03	34.1	24
04	5.3	24
05	22.3	24
06	12.4	24
07	15.5	24
08		24
09		24
10	21.7	24
11	16.4	24
12	11.8	24
13	24.5	24

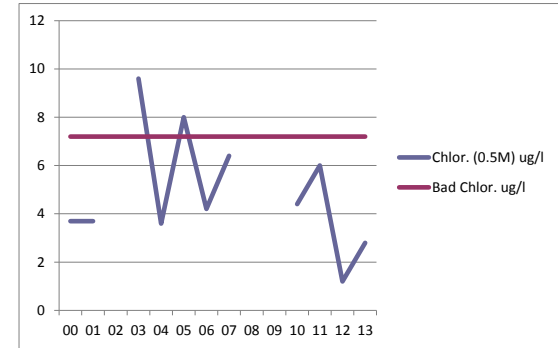
TOTAL PHOS. 2000 TO 2013 @ 0.5 METER. ug/l



JOHN'S POND

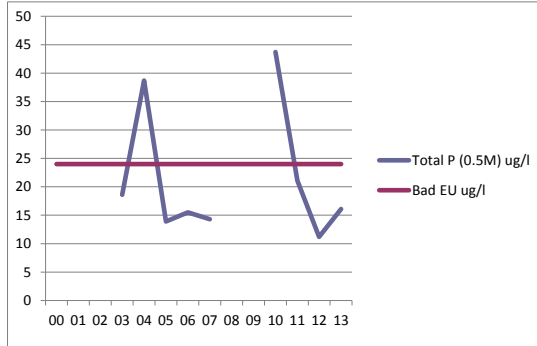
Year	Chlor. (0.5M) ug/l	Bad Chlor. ug/l
00	3.7	7.2
01	3.7	7.2
02		7.2
03	9.6	7.2
04	3.6	7.2
05	8	7.2
06	4.2	7.2
07	6.4	7.2
08		7.2
09		7.2
10	4.4	7.2
11	6	7.2
12	1.2	7.2
13	2.8	7.2

Chlor. 2000 to 2013 @ 0.5 Meters. Ug/l



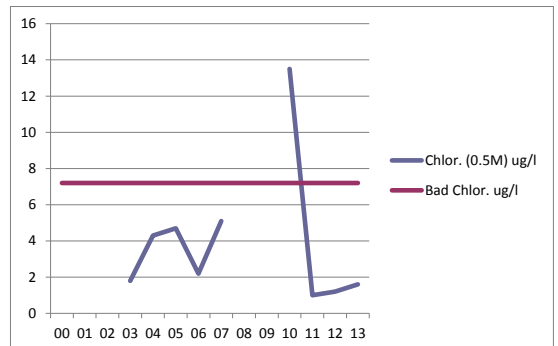
ASHUMET POND

Year	Total P (0.5M) ug/l	Bad EU ug/l
00		24
01		24
02		24
03	18.6	24
04	38.7	24
05	13.9	24
06	15.5	24
07	14.3	24
08		24
09		24
10	43.7	24
11	21.1	24
12	11.2	24
13	16.1	24



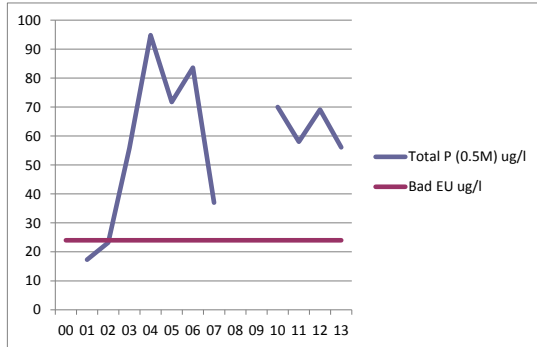
ASHUMET POND

Year	Chlor. (0.5M) ug/l	Bad Chlor. ug/l
00		7.2
01		7.2
02		7.2
03	1.8	7.2
04	4.3	7.2
05	4.7	7.2
06	2.2	7.2
07	5.1	7.2
08		7.2
09		7.2
10	13.5	7.2
11	1	7.2
12	1.2	7.2
13	1.6	7.2



SANTUIT POND

Year	Total P (0.5M) ug/l	Bad EU ug/l
00		24
01	17.3	24
02	23.2	24
03	55.8	24
04	94.8	24
05	71.7	24
06	83.6	24
07	37	24
08		24
09		24
10	70	24
11	58	24
12	69.1	24
13	56.1	24



SANTUIT POND

Year	Chlor. (0.5M) ug/l	Bad EU ug/l
00		7.2
01	2.2	7.2
02	6.5	7.2
03	11.4	7.2
04	6.3	7.2
05	32	7.2
06	77.5	7.2
07	51.9	7.2
08		7.2
09		7.2
10	99.7	7.2
11	19.4	7.2
12	11.4	7.2
13	8.8	7.2

